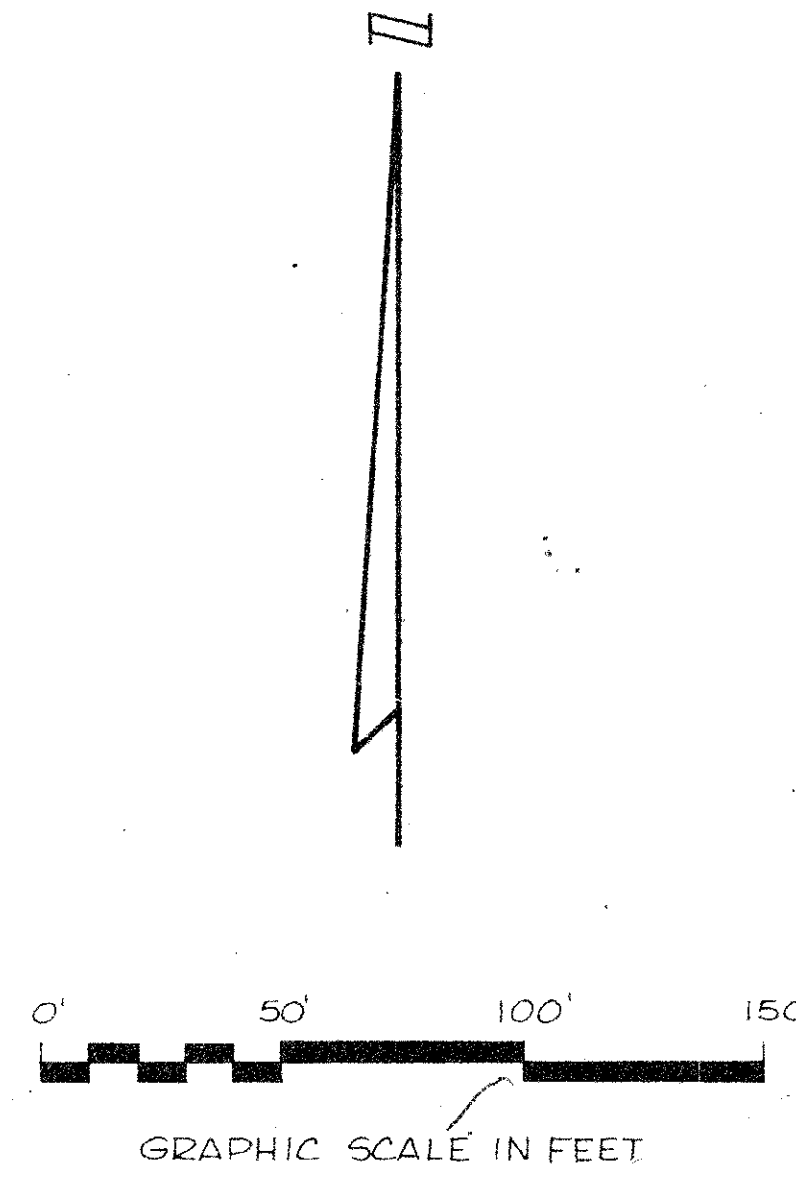
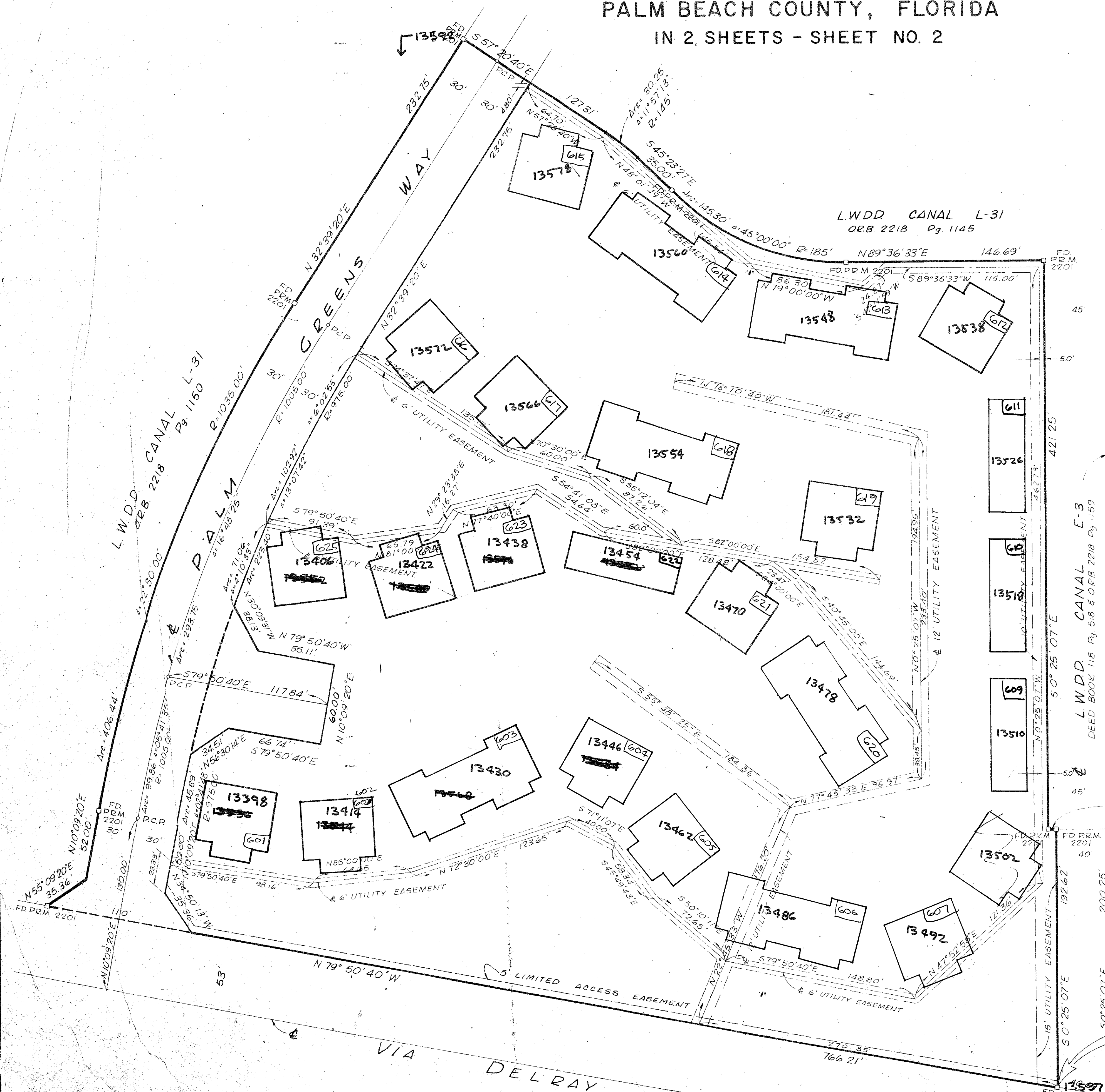


A PLANNED UNIT DEVELOPMENT  
**VILLADELRAY SECTION 6**  
 PALM BEACH COUNTY, FLORIDA  
 IN 2 SHEETS - SHEET NO. 2

195



- NOTES:
1. □ Denotes Permanent Reference Monument
  2. ○ Denotes Permanent Control Point
  3. Bearings cited herein are in the meridian of Plat II VILLADELRAY P.B. 30, Pgs. 77-79.
  4. There shall be no buildings placed on utility easements.
  5. There shall be no buildings, trees, or shrubs placed on drainage easements.

0324-303

P.O.B.

PLAT II VILLADELRAY  
 P.B. 30 Pg. 77-79

VILLADELRAY #6

Field Book No Y-II Pg	ROBERT E. JEN & ASSOCIATES, INC.	77-1088
Design J. THOMAS	ENGINEERS, PLANNERS, SURVEYORS	Date
Drawn C. GOSS	WEST PALM BEACH FLORIDA	Scale 1" = 40'
Checked W. L. M.		Sheet 2
Field		of 2
		File

VILLADELRAY SECTION 6  
 IN 2 SHEETS - SHEET NO. 2